

7600 11400 5700 11400

B A C D E

12 10 9 8 6 5 4 3 1

9500 4475 5025 9500 4520 4980 9500 9500

7600 11400 5700 11400

B A C D E

3

4

4

5

3

1

2

2

+105.15

1000

1000

1000

1000

1000

48

49

84

85

1700

2300

+105.75

1800

HES

1600

17249

17248

17247

17246

17245

17244

17243

17242

17241

17240

17239

17238

17237

17236

17235

17234

17233

17232

17231

17230

17229

17228

17227

17226

17225

17224

17223

17222

17221

17220

17219

17218

17217

17216

17215

17214

17213

17212

17211

17210

17209

17208

17207

17206

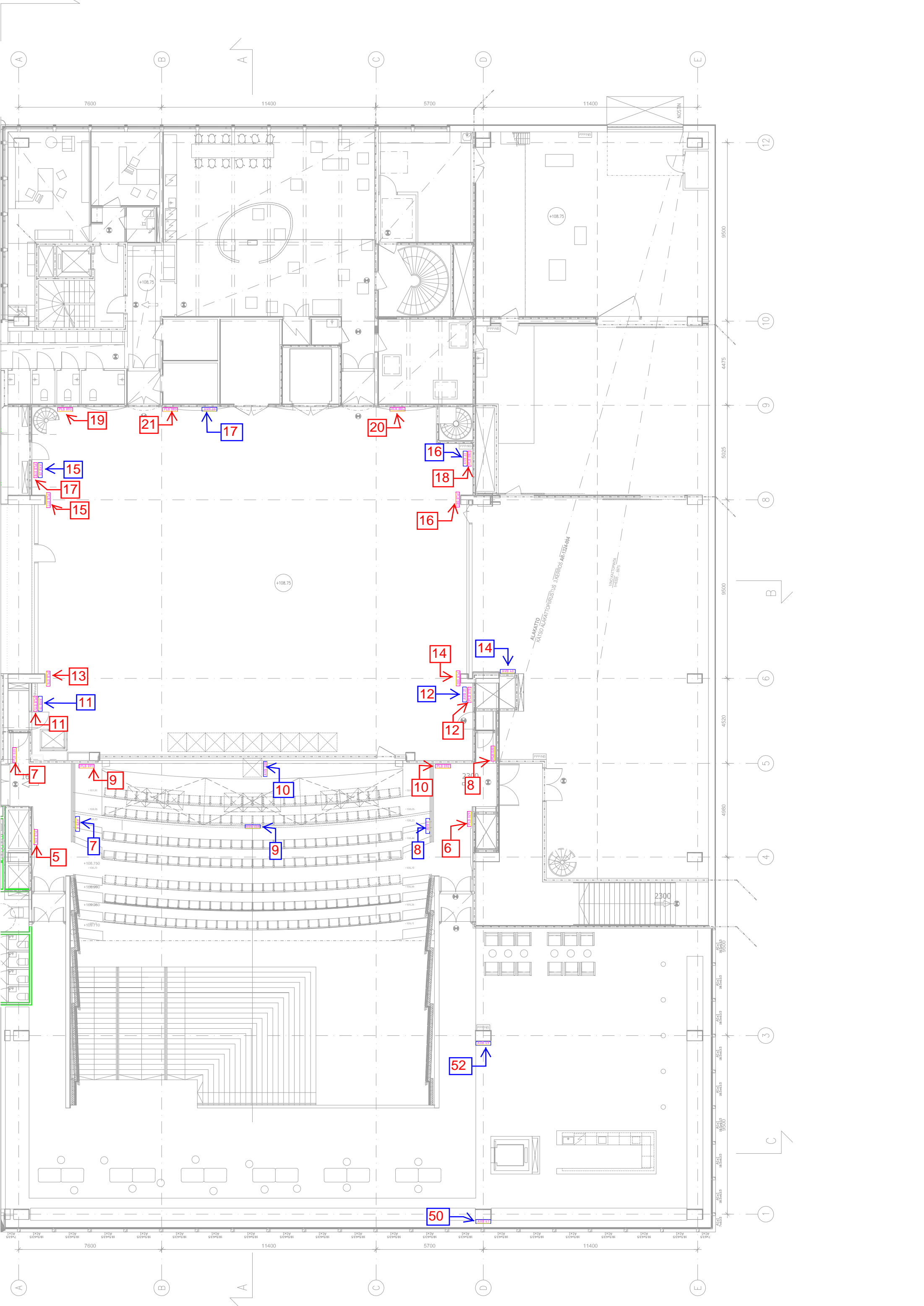
17205

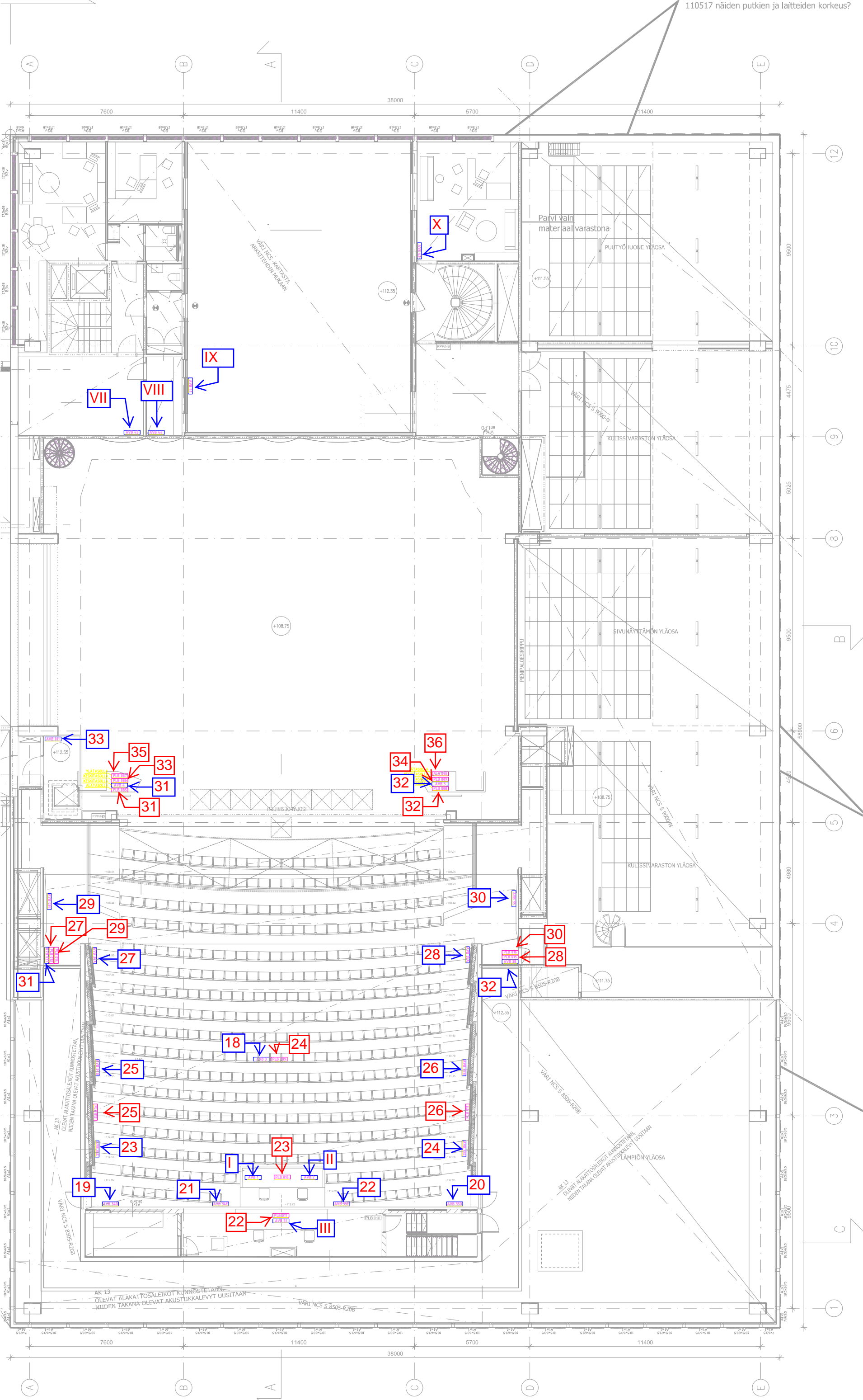
17204

17203

17202

17201





VII

VIII

IX

X

33

35

33

31

31

34

36

32

32

29

27

29

31

27

30

28

30

28

32

18

24

25

26

25

26

23

23

24

19

21

22

20

22

I

II

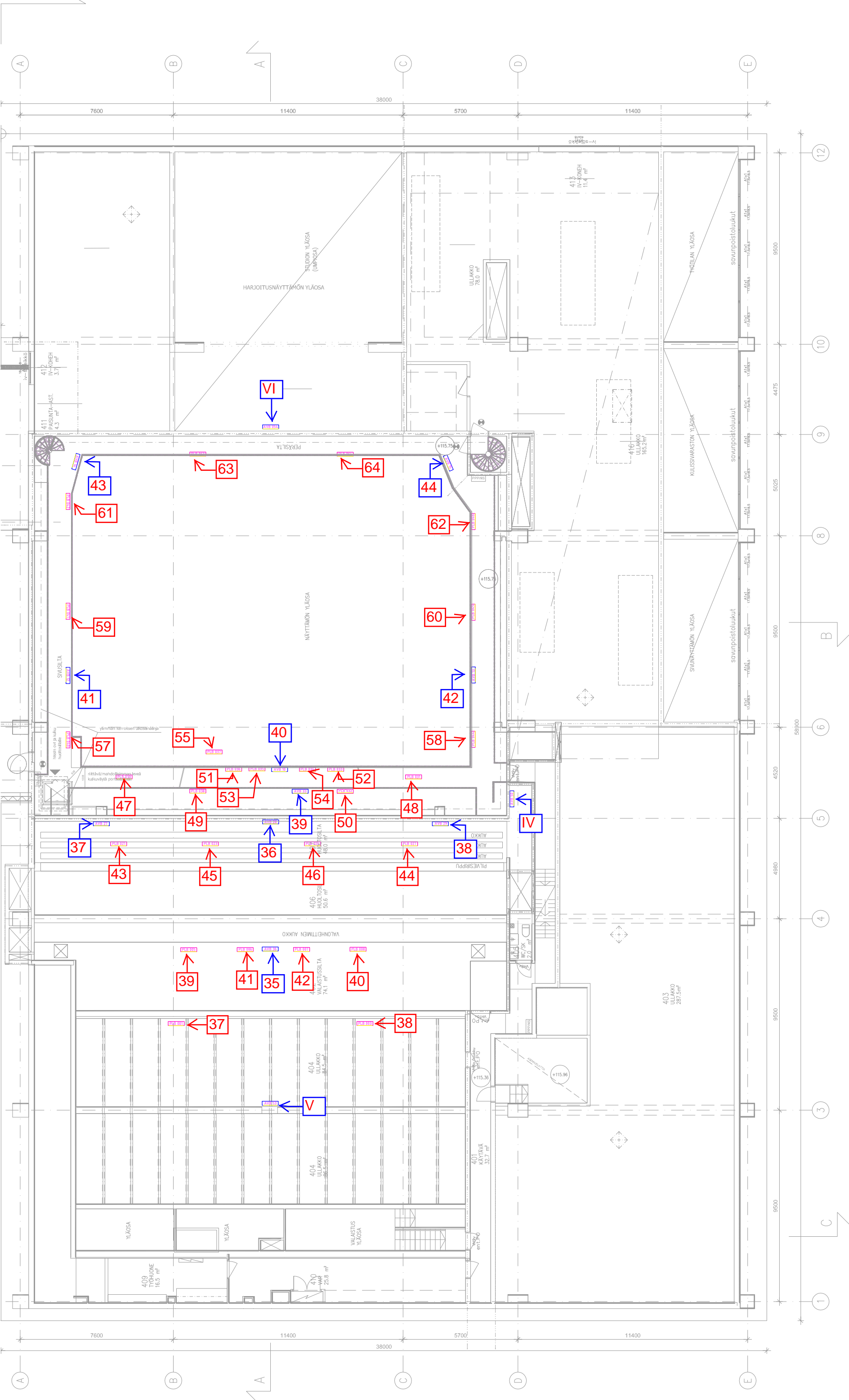
III

VARI NCS S. 8505-R20B

AK 13 OLEVA ALAKATTOSALEIKOT KUNNOSTETTAVAN NIIDEN TAKANA OLEVAT AKUSTIIKKALEVYT UUSITAIAN

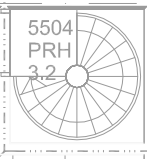
AK 13 OLEVA ALAKATTOSALEIKOT KUNNOSTETTAVAN NIIDEN TAKANA OLEVAT AKUSTIIKKALEVYT UUSITAIAN

VARI NCS S. 8505-R20B



24015

19500



71

69

70

+118.75

45

5201  
SILTA  
1-2 HLÖÄ  
78.1

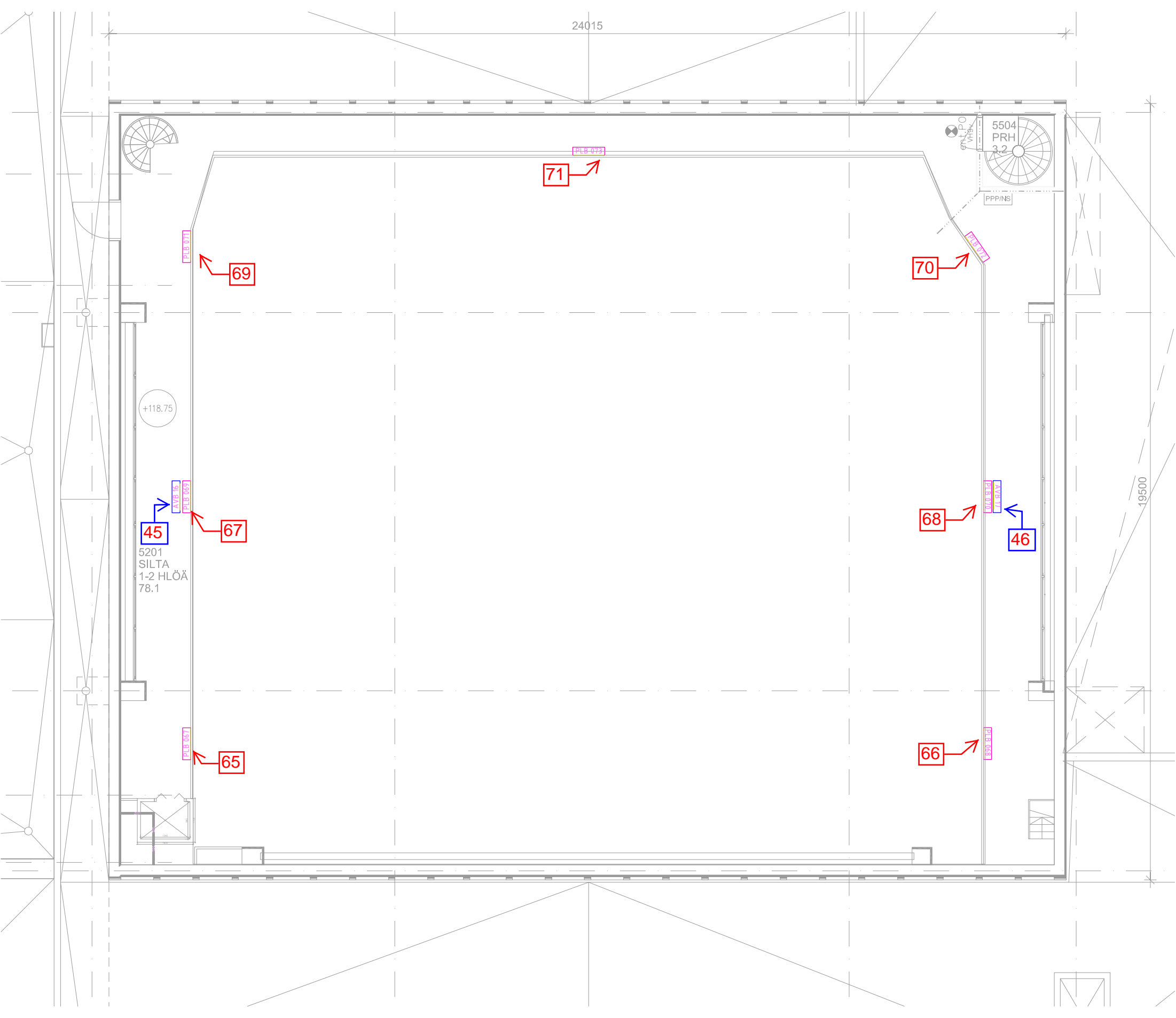
67

68

46

65

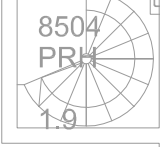
66



8202  
VALOKÄYTÄVÄ

VALOKÄYTÄVÄ

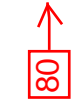
40.6



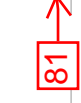
PLB 058



PLB 059



PLB 060



8201  
TEATTERITEKNINEN TASO, KÖYSIKONEISTO

82

404.1

AVB 18

PLB 074

PLB 054



47

PLB 053



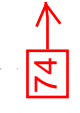
PLB 055



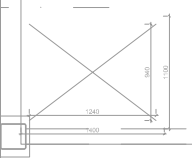
PLB 048



PLB 049



PLB 050



VALOKÄYTÄVÄ